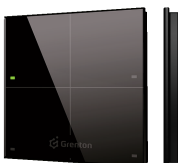


# User manual Touch Panel 4B TPA-204-T-0x

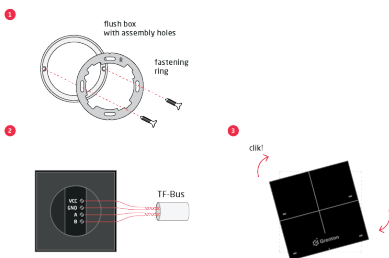
Touch Panel replaces traditional light switches.



## 1. Technical data

Device power supply	5-24 Vdc
Maximal power consumption	0,17 W
Maximal device current	7 mA (@24V)
Maximal wire cross section	1,5 mm <sup>2</sup>
Weight	114 g
Dimensions (H/W/D)	surface part: 80/80/10 mm, concealed part: Ø 50 mm / h: 22 mm
Operating temperature range	0 do +45 °C

## 2. Wiring diagram



Vcc	power supply signal
GND	power supply ground signal
A	TF-bus A signal
B	TF-bus B signal

## 3. Warnings and cautionary statements



### ATTENTION !

- Before proceeding with the assembly, read the installation schematics and full instructions available at [www.grenton.com](http://www.grenton.com). Failure to follow the guidelines contained in the instructions and other requirements of due care valid as a result of the nature of the equipment (device) may be dangerous to life / health, damage the device or installation to which it is connected, damage other property or violate other applicable regulations. The manufacturer of the device, Grenton Sp. z o.o. does not bear any responsibility

for the damage (property and non-property related) resulting from the assembly and / or use of the equipment not in accordance with the instructions and / or due diligence in handling the equipment (device).

- Device power supply, permissible load or other characteristic parameters have to be in accordance with the device specification, described in particular in the "Technical data" section.
- The product is not intended for children and animals.
- If you have technical questions or comments about the device operation, contact Grenton Technical Support.
- Answers to frequently asked questions can be found at: [www.support.grenton.pl](http://www.support.grenton.pl)



### DANGER !

- Danger to life caused by electric current!
- The components of the installation (individual devices) are designed to work in a home

electrical installation or directly in its vicinity. Incorrect connection or use may cause a fire or electric shock.

- All work related to the installation of the device, in particular works involving interference in the electrical installation, may be performed only by a person with appropriate qualifications or licences.
- When installing the device, make sure that the power supply voltage is disconnected from the circuit in which the device is connected or near which the assembly takes place.

## 4. CE marking

The manufacturer declares that the device is in full compliance with the requirements of EU legislation that includes the directives of a new approach appropriate for this equipment. In particular, Grenton Sp. z o.o. declares that the device fulfills the requirements on safety, specified by law, and that it conforms to the national

regulations that implement the appropriate directives: The Directive on the electromagnetic compatibility (EMC - 2014/30/UE) and the Directive on the limitation of the use of specific substances in electrical and electronic equipment (RoHS II - 2011/65/UE).



## 5. Warranty

Warranty available at: [www.grenton.com/warranty](http://www.grenton.com/warranty)

## 6. Manufacturer contact details

Grenton Sp. z o.o.

ul. Na Wierchowinach 3

30-222 Kraków, Polska (PL)

[www.grenton.com](http://www.grenton.com)